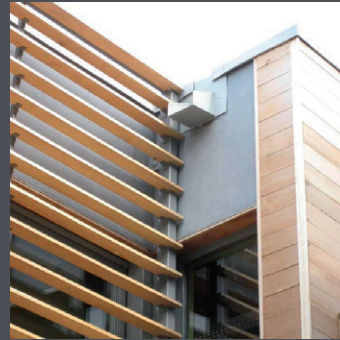


## ANCILLARY PRODUCTS

### BRISE SOLEIL

Brise Soleil refers to a variety of permanent sun-shading techniques and can consist of a fixed arrangement of horizontal, inclined or vertical louvres (slats that are angled to admit light and air, but keep out rain, direct sunshine, and noise). Not only can arrangements of louvres reduce solar heat gain and glare in the summer they allow for low angle sun in the winter which can provide some passive solar heating. Brise Soleil can also enhance the aesthetic appeal of the building.



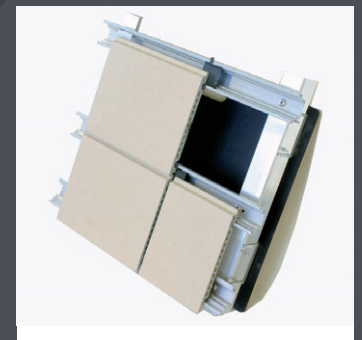
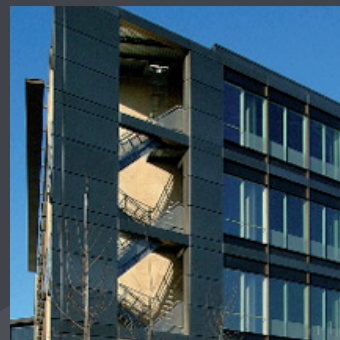
### BALUSTRADE

Stainless steel balusters are used to support railings, such as the rail on a banister. They may be used in houses or for exterior areas, but one of the more widespread applications of stainless steel balusters is in balconies. A series of thin stainless steel balusters can elegantly support a handrail as well as a bottom rail that outlines the edge of the balcony. Along with a gorgeous appearance and practical applications, the presence of balusters not only ensures that the balcony is safe but they are also a cost-effective way of creating a balustrade for use in outside or inside areas.



### RAINSCREEN CLADDING

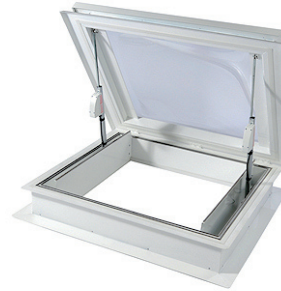
Rainscreen cladding is a layer of water-shedding material that is placed on top of existing walls and roofs, effectively becoming the new outer layer of a building. It is placed directly over the previous outer layer which improves the water-shedding properties of a building and allows insulation to work more effectively. Rainscreen cladding is commonly used on older buildings that consist of less weatherproof materials and have had more time to develop leaks.



## SMOKE VENTILATION

Smoke control using natural ventilation is a particularly effective means of protecting escaping occupants, those awaiting rescue and fire-fighters from the immediate dangers of fire and smoke.

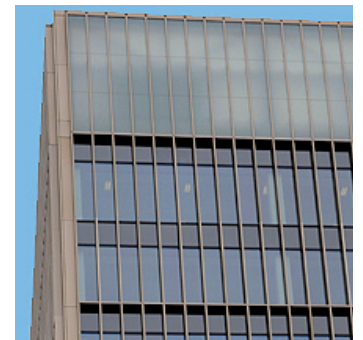
Border Energy Smoke Ventilation systems are designed to ensure a natural flow of smoke from a building into the atmosphere, thus ensuring the safety of occupants inside and reducing smoke damage to the building.



## PLANTROOM SCREEN

Plant room screening is designed specifically to hide unsightly roof mounted equipment and to protect it from various environmental factors such as wind, snow and rain. They can also reduce noise and act as a barrier to stop children getting near dangerous equipment.

Whatever your requirements, Border Energy will design and install a bespoke plant room screen to suit your particular project.



## LANTERN ROOFLIGHT

A Lantern Rooflight is a framework of Aluminium or PVCu containing a glass windowpane that is built into a wall or roof to admit light and remains flush with the wall/roof slope. Advantages on Lantern Rooflight's include a vast improvement on light penetration, smoke ventilation that can be built-in to allow for fire smoke danger, and automatic or manual window openers that can be fitted to allow for easy ventilation.



Accredited Members of:

